

aluminum
PLATE

ontario
PANELIZATION



1

REVOLUTIONIZING THE WAY WE BUILD



1. TTC MUSEUM STATION RENOVATION

(pictured on front cover)

Product: Alumitex 1/8" Aluminum Plate, Lexan

Location: 75 Queen's Park, Toronto, ON

Architect: Diamond + Schmitt Architects Inc.

Unique Features: These track level wall panels have many unique design features. The large "MUSEUM" letters, constructed out of 3 mm aluminum plate, act as a frame for the fire-rated Lexan backdrop. The hieroglyphic inscription, machined on the back of the panels using a CNC, originates from the tomb of ancient Egyptian nobleman, Met-jet-jy, and dates back to approximately 2300 BC.

2. TORONTO AIRPORT - TERMINAL 3 WEST PROCESSOR

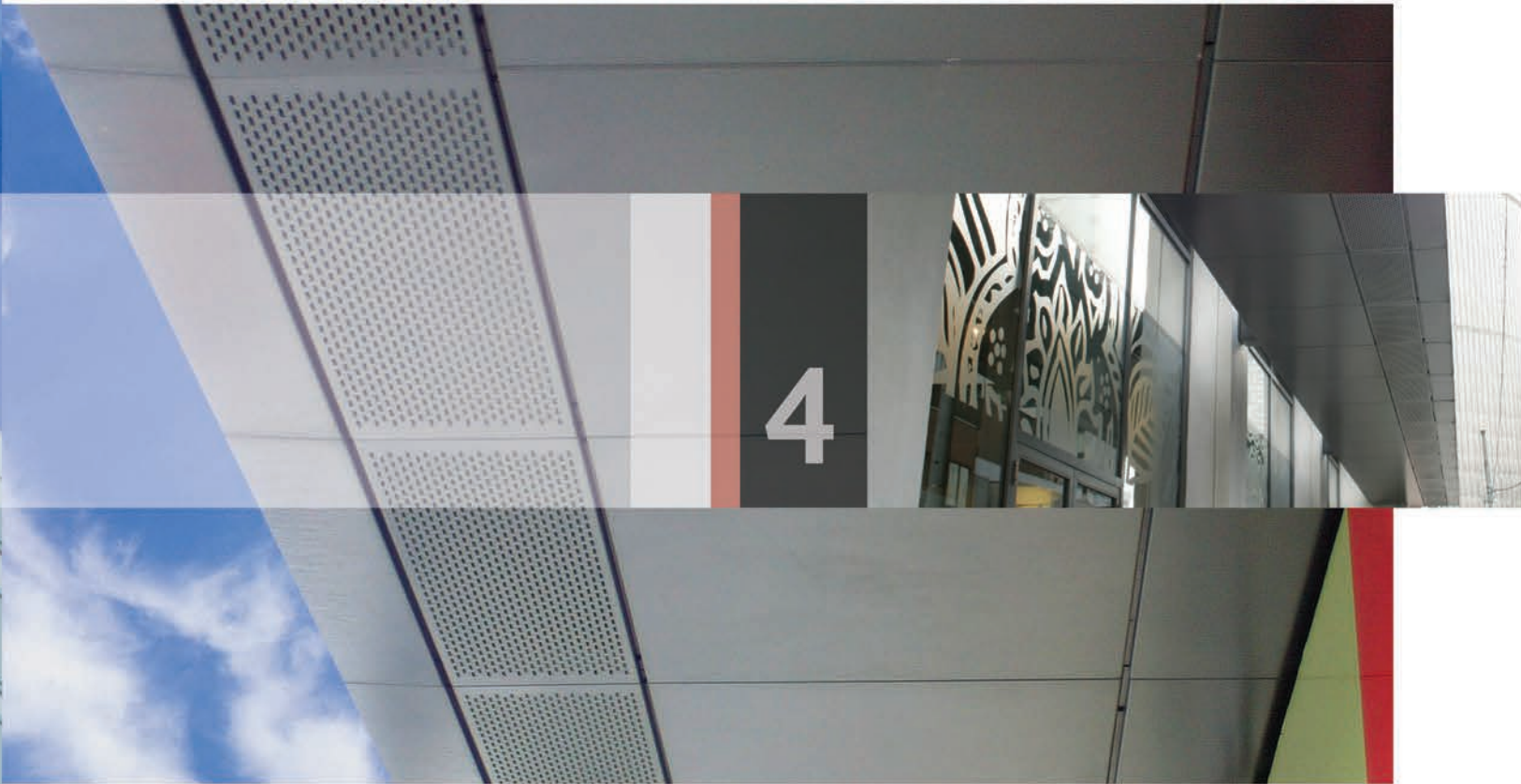
Product: Alumitex 1/8" Aluminum Plate

Location: Toronto Pearson International Airport

Architect: Scott Associates Architects Inc.

Unique Features: The aluminum plate panels were finished in seafoam green with silver recessed stripes to blend into the sloped, glazed curtain wall. The intended design was realized through the continuation of the silver aluminum plate stripes through the curtain wall and the use of curtain wall pressure caps as features on the aluminum plate walls.





3. MEDWAY HIGH SCHOOL ADDITION AND RENOVATION

Product: Alumitex 1/8" Aluminum Plate

Location: 14405 Medway Rd., Arva, ON

Architect: Malhotra Nicholson Sheffield Architects Inc.

Unique Features: This project consisted of a continuous band of 3 mm aluminum plate panels with hairline joints around the perimeter of the circular vestibule parapet. The parapet panel system seen here is a two-part system that consists of a bottom panel designed to cover the face of the parapet and a parapet cap panel to cover the top of the parapet.



4. ONE CITY HALL CONDOMINIUMS - ART CANOPY

Product: Alumitex 1/8" Aluminum Plate

Location: 570 Bay St., Toronto, ON

Architect: Diamante Development Corp.

Unique Features: The 3 mm aluminum plate canopy was designed to allow art to be displayed at street level underneath the soffit. A row of perforated soffit panels were designed with lights mounted inside to illuminate art and merchandise so it can be seen from the street below. This project also utilized a hairline joint system and an overlap/underlap system to connect the panels. This required a special installation procedure, but created a truly unique look.

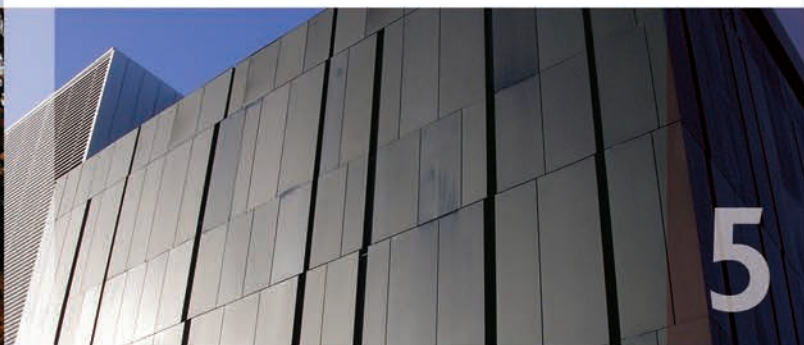
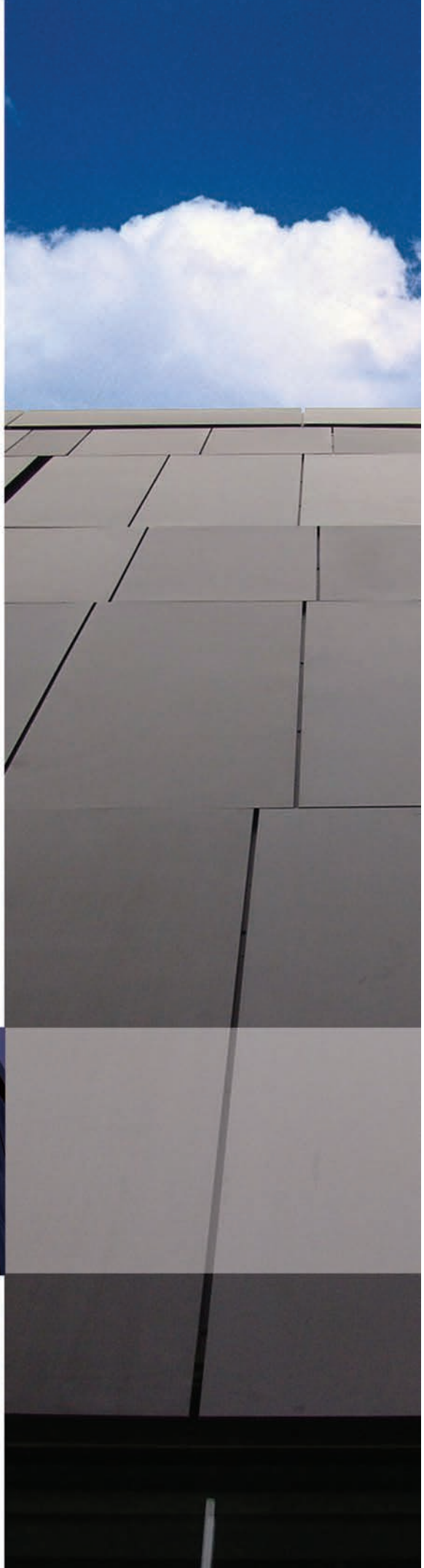
5. PERIMETER INSTITUTE FOR THEORETICAL PHYSICS

Product: Alumitex 1/8" Aluminum Plate

Location: 31 Caroline St. N., Waterloo, ON

Architect: Saucier + Perrotte Architectes

Unique Features: Home to some of our greatest minds, the building blurs the line between interior and exterior space. A different cladding material and pattern was assigned to each of the building's functions and are seamlessly uninterrupted by the glass envelope. The black anodized aluminum plate that clads the auditorium varies in width and is capped with a fascia of the same material. This continues east in the form of a beam that supports the ends of the silver ACM beams of the atrium skylight.





6. UWO - LONDON HALL RESIDENCE

Product: Alumitex 1/8" Aluminum Plate

Location: 1140 Western Rd., London, ON

Architect: architects Tillmann Ruth Mocellin

Unique Features: Aluminum plate panels provide a subtle transition from the natural stone columns to the large canopies with wooden soffits. These canopies were capped with a plate fascia and roof panels that combined with a nearly seamless 1/8" plate gutter system. This project received the 2006 London Urban Design Award.



2006



THE LEADER IN EFFICIENT,
AESTHETIC, FUNCTIONAL
BUILDING ENVELOPES
OF THE HIGHEST QUALITY.

530 Admiral Drive,
London, Ontario,
Canada N5V 0B2
t. 519.659.8900 f. 519.455.0253 ontariopanelization.com

